

Faster,
Strong and
Removable



TORAB[®] CON
*Direct Fixing
to Concrete*



Fixing Range TORAB® CON



Drill bit. SDS Ø6 mm.



Adapter. It is situated on the bit and allows you to mount the socket wrench.



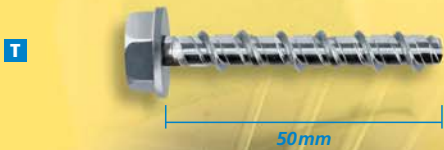
Nut setter 10. Necessary for installation. Fits all sizes.



M6x6
M8x8



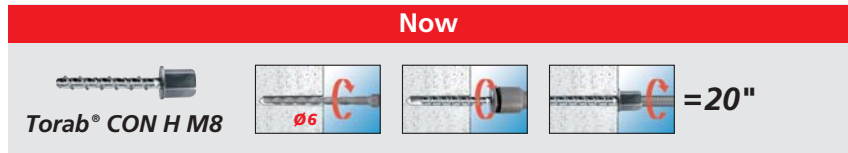
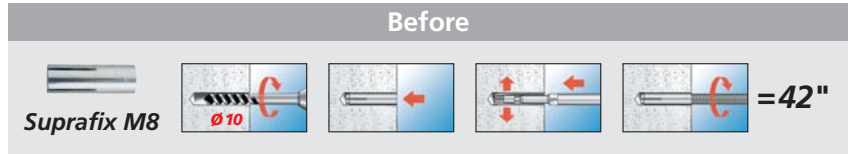
M6x6
M8x15



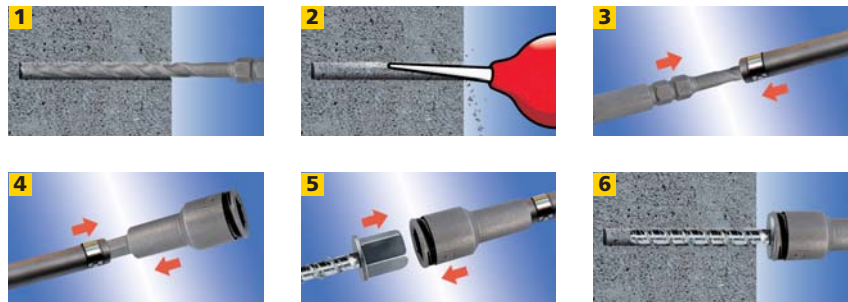
50mm

Ø7,5mm

- **Faster.** Drill and fix with the same tool.



- **Removable and reusable.**
- **Versatile.** T, M, H (M6-M8).
- **High vibration resistance.**
- **Ø6mm.**
- **Suitable for cracked (C20/25=100Kg) and uncracked concrete (C20/25=135Kg).**



Data	Prices		Packaging			
	Reference	€x100 u.	€x1 u.	Box (pcs)	Packing Box (pcs)	Code
TORAB CON H M6		38,90	-	150*	1350	9650TRBCH
TORAB CON H M8		60,50	-	150*	1350	9850TRBCH
TORAB CON M M6		37,80	-	150*	1350	9650TRBCM
TORAB CON M M8		41,05	-	150*	1350	9850TRBCM
TORAB CON T		33,50	-	150*	1350	9650TRBC
Nut Setter TORAB CON		-	27,00	1	-	910LLTRBCA
Drill Bit SDS TORAB CON		-	7,55	1	-	6115SDSTRBCA
Adapter TORAB CON		-	18,35	1	-	9ATRBCA

* Each package includes a drill bit.



Apolo Fijaciones y Herramientas, S.L.

Polígono Industrial Pla de la Bruguera
Garrotxa, Naves 10-22
08211 Castellar del Vallès (Barcelona) - Spain

Tel. +34 93 747 33 33 · Fax +34 93 747 33 37
E-mail: cial@apolo.es

www.apolo.es

